



DE250 / Engine Dynamometer



DE250 Eddy Current Dynamometer

Specifications

Power: 335 hp (250 kW)

Torque: 886 ft-lb (1,200 Nm)

Speed: 8,000 rpm

Water Use: 47 gpm (3.0 lps) (No Cooling System)

Shipping Weight: 3,086 lb (1,400 kg)

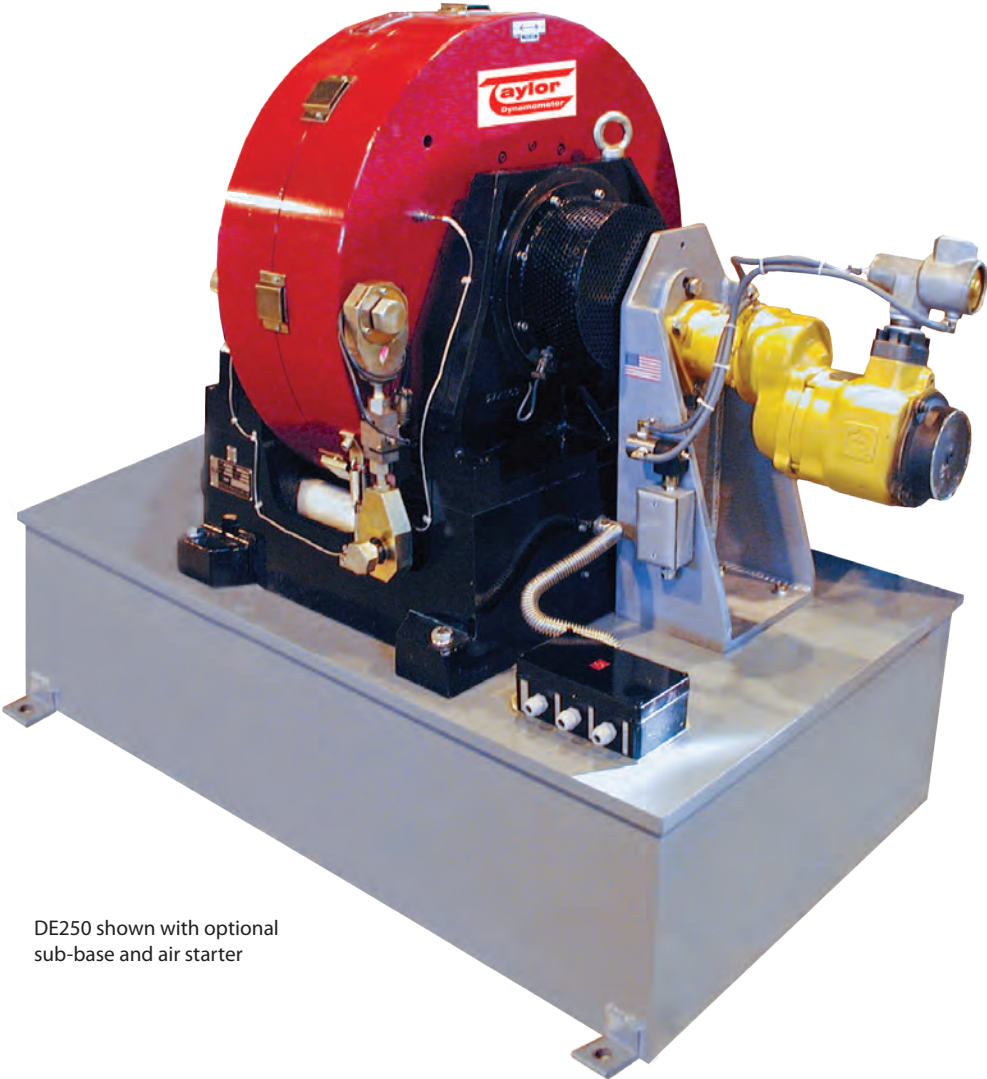
Inertia Value: 11 ft² · lb (0.464 m² · kg)

Recommended Accessories

- Driveshaft
- Driveshaft Guard
- Adapter Plate Kit
- Base Kit
- Engine Cart
- Cooling Column
- Charge Air Cooler
- Water Recirculating System

Total Test Success

Optional Accessories



DE250 shown with optional sub-base and air starter

Optional Cooling Column



Optional Engine Cart (Engine not Included)



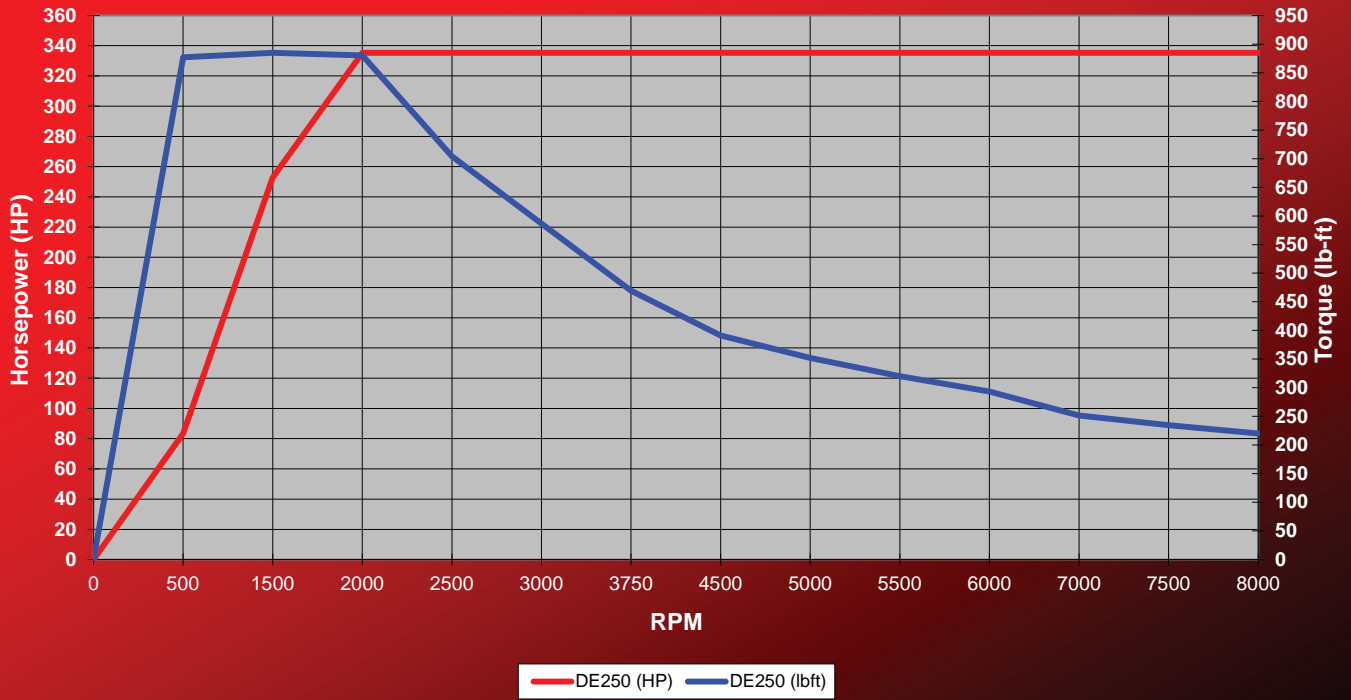
Optional Driveshaft Cover



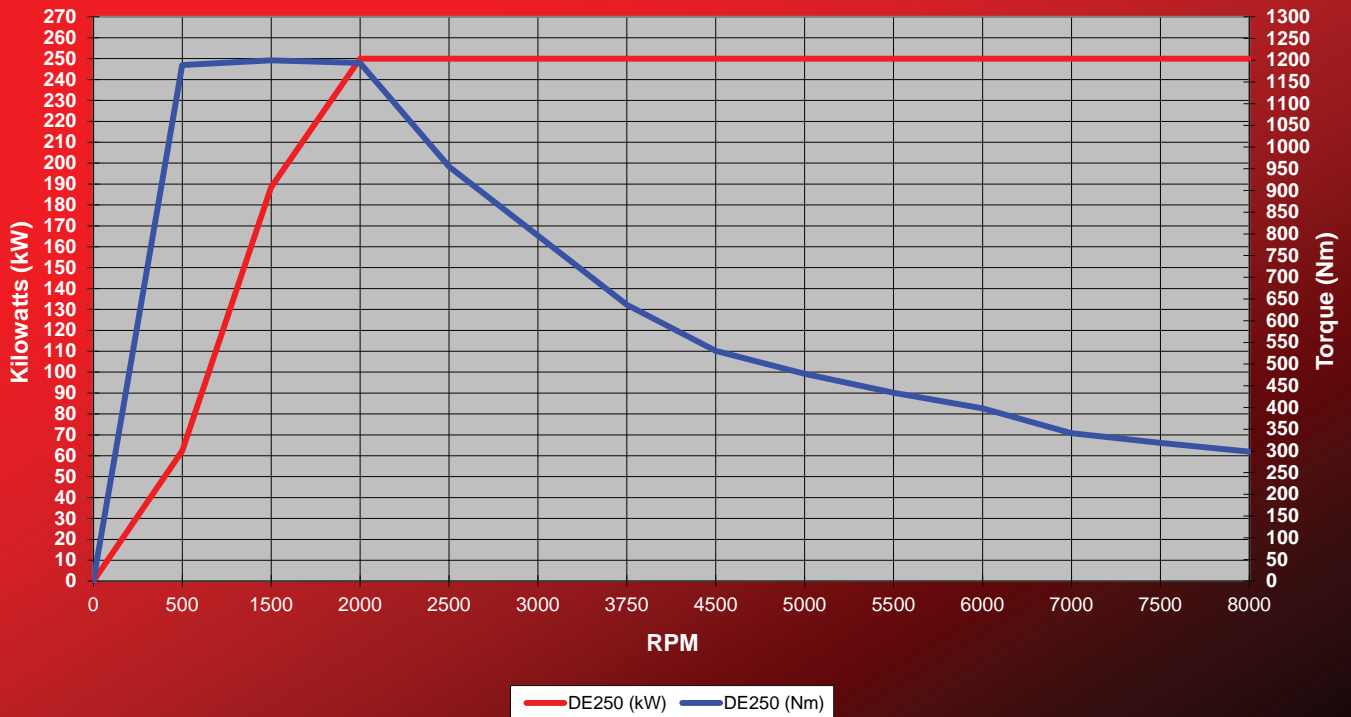
Optional Charge Air Cooler

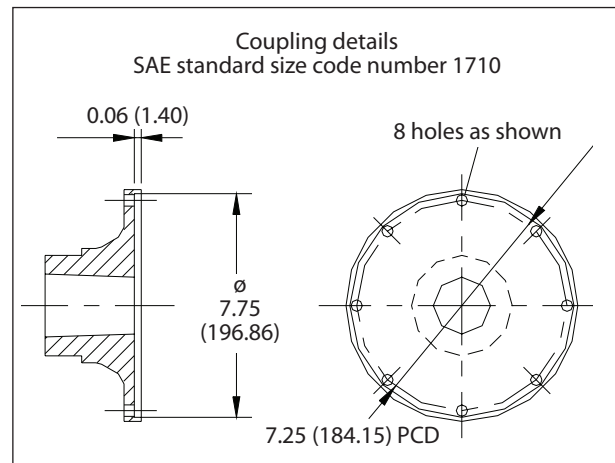
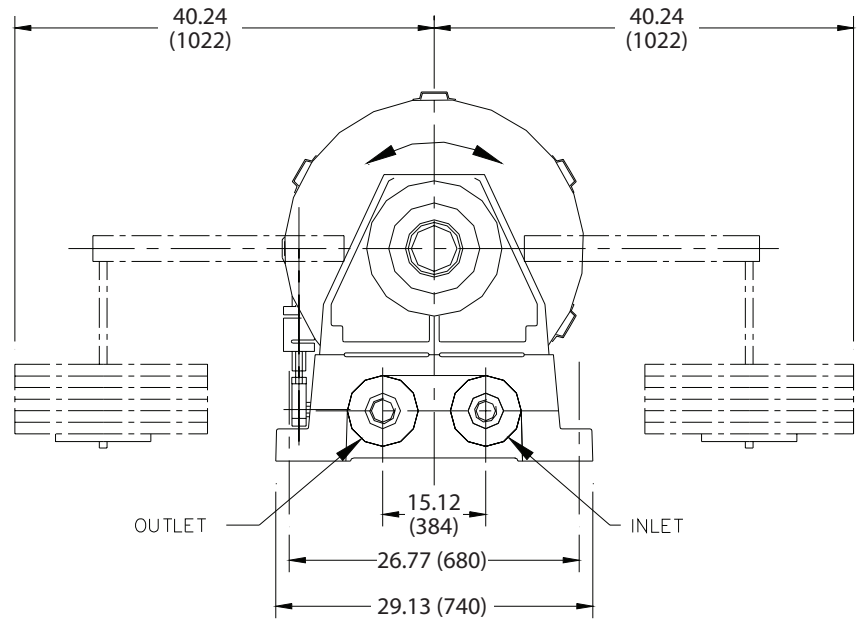
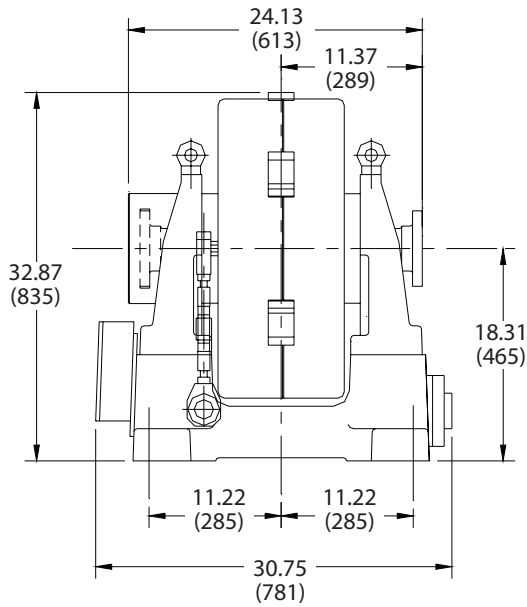


DE250 (English)



DE250 (Metric)





Specifications

Power: 335 hp (250 kW)

Torque: 886 ft-lb (1,200 Nm)

Speed: 8,000 rpm

Water Use: 47 gpm (3.0 lps) (No Cooling System)

Shipping Weight: 3,086 lb (1,400 kg)

Inertia Value: 11 ft² · lb (0.464 m² · kg)

Everything you need to succeed



3602 West Wheelhouse Road, Milwaukee, Wisconsin 53208 U.S.A.
(414) 755-0040 www.taylordyno.com

SMS2030v004