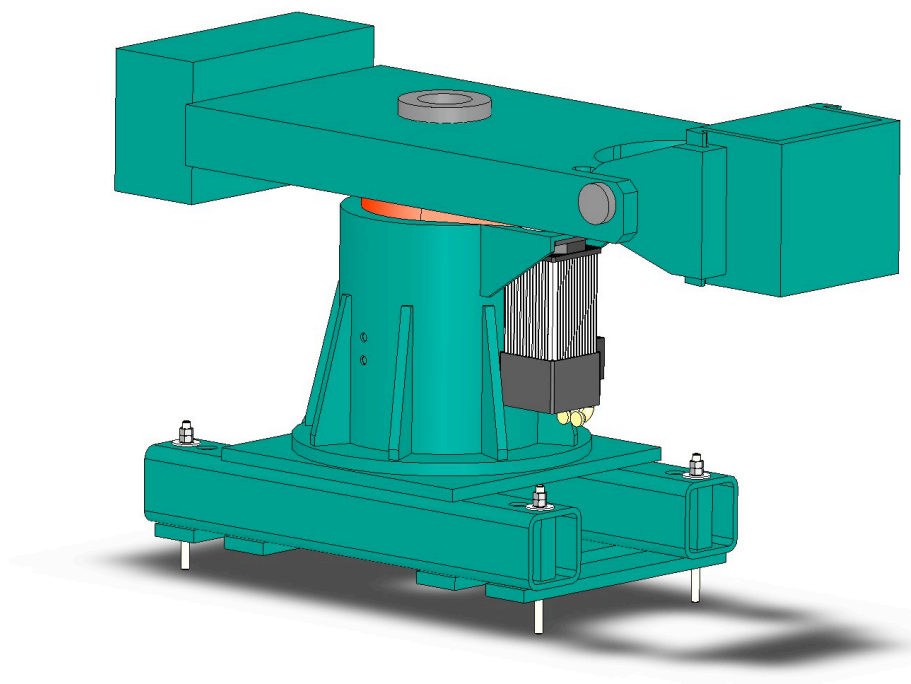


MODEL C60-1

- * 1 meter platform radius
- * 0.2 x 0.3 m removable container platform
- * 60 kg at 80 g's
- * 80 g's standard, 1000g's optional
- * Electrical and optical passages
- * Hydraulic rotary joints and power rings
- * Unbalance readout
- * On arm data acquisition system



MODEL C60-1

Dimensional data	Platform radius	1	m
	Nominal radius	0.85	m
	Container platform usable width	0.2	m
	Container platform usable depth	0.3	m
	Container height	0.25	m
	Maximum usable height	0.5	m
Performances	Model mass (maxi.)	60	kg
	Acceleration at maximum payload	80	g
	Payload mass at max. acceleration	60	kg
	Acceleration range	4 to 80	g
	Acceleration accuracy	+/- 0.2	g
	Vibration at platform (maxi.)	0.3	g _{RMS}
	Maximum operating imbalance	+/- 5	kN
Power plant	Installed power	6	kVA
	Motor speed range	18 to 1800	Rpm
	Transmission ratio	6	
	Centrifuge boom rate	3 to 300	Rpm
	Power consumption at 80 g's	6	kW
	Mains supply	380 / 410	V
Electrical slip rings	Current rating	1 to 5	A
	Operating voltage AC or DC	10 to 410	V
	Noise	10	mΩ _{RMS}
	Quantity	up to 30	
	Frequency	DC to 10	MHz
Optical rotary joint	Number of passages	2	
	Optical coupling Ethernet or Intranet	1	
	Transmission rate	100	MHz
Hydraulic rotary joint	Number of passages (maxi.)	2	
	Pressure rating	10 to 200	bars
	Flow	10 to 50	l/min
	Fluid temperature	10 to 50	°C
Unbalance readout	Balancing range	+/- 10	kN
	Balancing resolution	+/- 0.1	kN
	Readout accuracy	+/-20	%