



## DE500 / Engine Dynamometer



### DE500 Eddy Current Dynamometer

#### Specifications

Power: 670 hp (500 kW)

Torque: 2,213 ft-lb (3,000 Nm)

Speed: 7,500 rpm

Water Use: 90 gpm (5.7 lps) (No Cooling System)

Shipping Weight: 4,740 lb (2,150 kg)

Inertia Value: 52 ft<sup>2</sup> · lb (2.196 m<sup>2</sup> · kg)

#### Recommended Accessories

- Driveshaft
- Driveshaft Guard
- Adapter Plate Kit
- Base Kit
- Engine Cart
- Cooling Column
- Charge Air Cooler
- Water Recirculating System

**Total Test Success**

# Optional Accessories



DE250 shown with optional sub-base and air starter

Optional Cooling Column



Optional Engine Cart (Engine not Included)



Optional Driveshaft Cover



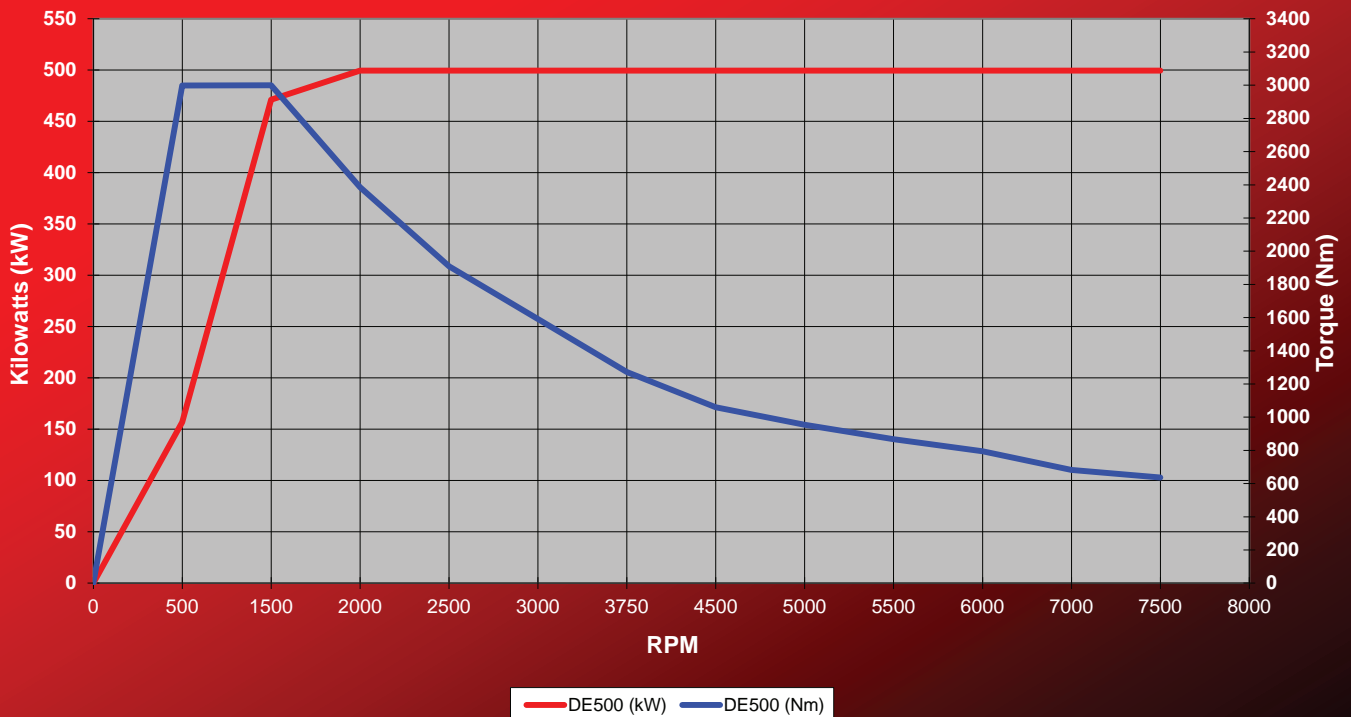
Optional Charge Air Cooler

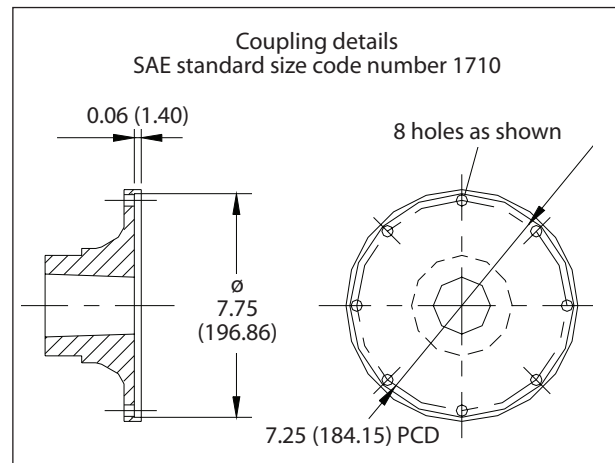
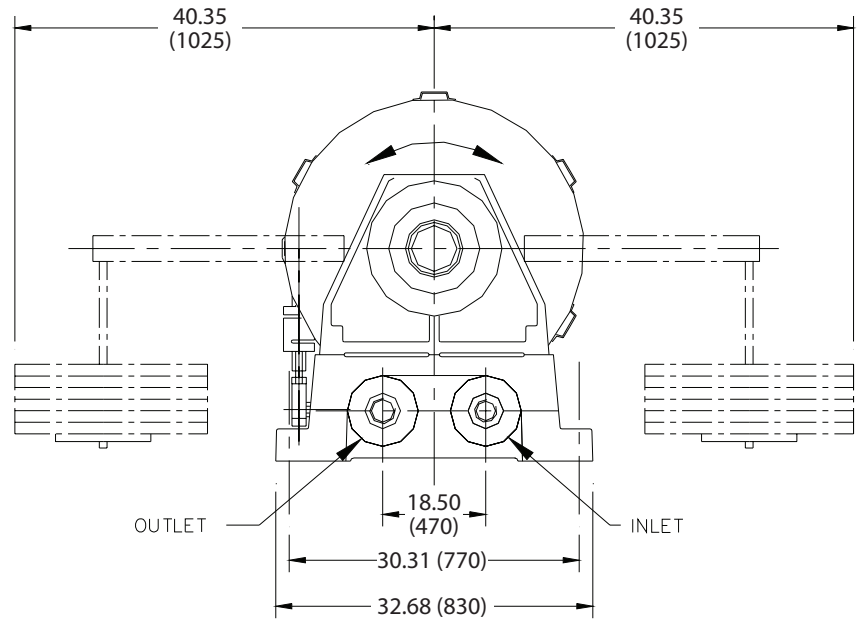
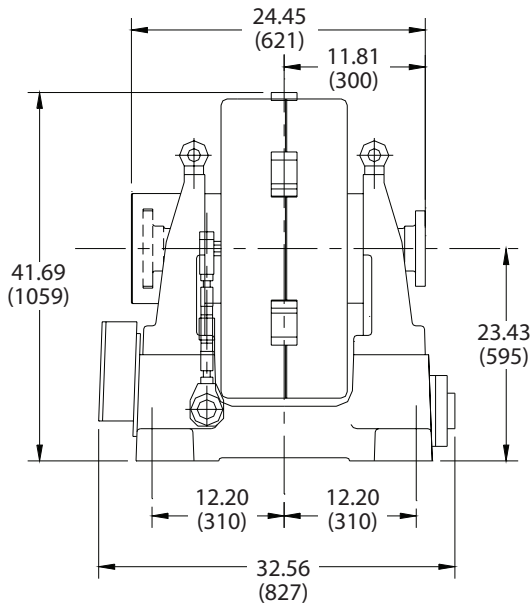


### DE500 (English)



### DE500 (Metric)





## Specifications

Power: 670 hp (500 kW)

Torque: 2,213 ft-lb (3,000 Nm)

Speed: 7,500 rpm

Water Use: 90 gpm (5.7 lps) (No Cooling System)

Shipping Weight: 4,740 lb (2,150 kg)

Inertia Value: 52 ft<sup>2</sup> · lb (2.196 m<sup>2</sup> · kg)

*Everything you need to succeed*



3602 West Wheelhouse Road, Milwaukee, Wisconsin 53208 U.S.A.  
(414) 755-0040 [www.taylordyno.com](http://www.taylordyno.com)

SMS2032v004